

HIGH CUPBOARDS HIGH CUPBOARDS ECO

The Eco range is designed for small-scale catering sites as well as restaurants. Functional, this range is designed to offer an excellent quality/price ratio with a limited number of items.



Eco range:
All stainless steel
AISI 441 (F18)

- ① Slop top - 15° inclined top
- ② Hinged or sliding doors
- ③ Load per shelf: 50 or 100 kg
- ④ Feet: black ABS Ø 40 mm, H 155 mm, adjustable up to 70 mm

"Grande Cuisine"
cupboard range
All stainless steel
AISI 304L



HIGH CUPBOARDS Grande Cuisine Cupboards

Grande Cuisine range meet the requirements of the architects and kitchen consultants for the tenders.



High cupboards with hinged doors ECO

- Entirely in AISI 441 (F18) stainless steel
- Sloping top
- Double panel doors to strengthen the cupboard
- 1 lock + 1 handle per door
- Load per shelf: 50 kg

1 hinged door cupboard 475 mm width

Sloping top



- Feet: black ABS Ø 40, H 155 mm, adjustable up to 70 mm
- Stainless steel feet in option, not available on stainless steel castors
- Hinges on the left

Designation	L x D x H mm	Kg	Ref.
1 double panel door - 3 shelves (two of them adjustable in height)	600 x 475 x 1935	51	MATK1P
1 double panel door - 1 vertical partition up to 315 mm from the bottom - 3 small shelves, 1 of them adjustable in height	600 x 475 x 1935	52	MATK1PV

Shipping within 48h

OPTIONS FOR MATK1P / MATK1PV	Kg	Ref.
Additional shelf	2.08	SAMATK16/06
Retention tray in AISI 304L stainless steel to be placed at the bottom of cupboard - Dim.: 535 x 422 x H 35 mm		SEQ045

2 hinged doors cupboard 475 mm width

Sloping top



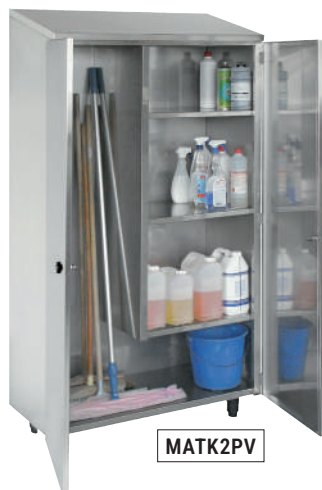
- Feet : black ABS Ø 40 mm, Height 155 mm ajustable on 70mm
- Stainless steel feet and stainless steel castors in option

Designation	L x D x H mm	Kg	Ref.
2 double panel doors 3 shelves, 2 of them adjustable	1000 x 475 x 1935	74	MATK2PH
2 double panel doors - 1 vertical partition to 315 mm from the bottom - On the right, 3 small shelves, 1 of them adjustable	1000 x 475 x 1935	74	MATK2PV

Shipping within 48h

OPTIONS FOR MATK2	Kg	Ref.
Additional shelf for MATK2PH	2.08	SAMATK16/10
Additional shelf for MATK2PV	2.08	SAMATK16/06
Retention tray in AISI 304L stainless steel to be placed at the bottom of cupboard - Dim.: 935 x 422 x H 35 mm		SEQ043

Shipping within 48h



Options for high cupboards

Designation	Ref.
4 stainless steel feet - Add X to the end of the reference	.../X
4 stainless steel castors (2 with brake) - Add RX to the end of the reference, not available for 1 door cupboards	.../RX

2 hinged doors cupboard 600 mm width

Sloping top



- Entirely in AISI 441 (F18) stainless steel
- Sloping top
- Feet : black ABS Ø 40 mm, Height 155 mm ajustable on 70 mm
- Stainless steel feet and stainless steel castors in option

			ON BLACK ABS FEET	ON STAINLESS STEEL CASTORS
Designation	L x D x H mm	Kg	Ref.	Ref.
2 double panel doors	1000 x 600 x 1935	80	MABK10	MABK10RX
3 shelves, 2 of them adjustable	1200 x 600 x 1935	93	MABK12	MABK12RX
	1400 x 600 x 1935	108	MABK14	MABK14RX

Shipping within 48h

OPTIONS FOR MABK	Kg	Ref.
Additional shelf for MABK10	4.22	SAMABK16/10
Additional shelf for MABK12	5	SAMABK16/12
Additional shelf for MABK14	5.9	SAMABK16/14

Shipping within 48h

High cupboard with sliding doors ECO

Sloping top



- Entirely in AISI 441 (F18) stainless steel
- Sloping top
- 2 stainless steel double panel sliding doors – Lock + Handles
- 4 feet: black ABS Ø 40, H 155 mm, adjustable up to 70 mm (6 feet from l. 1600 mm)

- Stainless steel feet and stainless steel castors in option
- 3 shelves (506 mm wide), 2 of them adjustable in height
- Load per shelf: 50 kg distributed over the shelf



Designation	HIGH CUPBOARD HEIGHT 1935 mm				ADDITIONAL SHELF	
	L X D mm	Kg	Feet	Ref.	Kg	Ref.
High cupboard with sliding doors	1000 x 600	90	4	MAGK10	4.22	SAMAGK16/10
	1200 x 600	91	4	MAGK12	5	SAMAGK16/12
	1400 x 600	111	4	MAGK14	5.9	SAMAGK16/14*
	1600 x 600	118	6	MAGK16	6.7	SAMAGK16/16*
	1800 x 600	129	6	MAGK18	7.6	SAMAGK16/18*

Shipping within 48h

*reinforced shelf

Options for high cupboards

Designation	Ref.
4 stainless steel feet - Add X to the end of the reference	.../X
4 stainless steel castors (2 with brake) (up to 1400 mm) - Add RX to the end of the reference	.../RX

High cupboard with hinged doors

- Entirely in AISI 304L stainless steel
- Double panel doors to strengthen the cupboard
- 1 Lock + 1 handle per door
- Load per shelf: 50 kg
- Top sloping at 15°

► **CUSTOMIZED:**
CONSULT US

1 hinged door cupboard 475 mm width

Sloping top



- Feet: black ABS Ø 40, H 155 mm, adjustable up to 70 mm
- Stainless steel feet in option, not available on castors
- Height of front: 1810 mm
- Hinges on the left

Designation	L x D x H mm	Kg	Ref.
1 double panel door - 3 shelves (two of them adjustable in height)	600 x 475 x 1935	51	MAT1P
1 double panel door - 1 vertical partition up to 315 mm from the bottom - 3 small shelves, 1 of them adjustable in height	600 x 475 x 1935	52	MAT1PV

► **CUSTOMIZED:** CONSULT US

OPTIONS FOR MAT1	Kg	Ref.
Additional shelf for MAT1P or MAT2PV	2.08	SAMAT16/06
Retention tray in AISI 304L stainless steel to be placed at the bottom of cupboard Dim.: 535 x 422 x H 35 mm		SEQ045

Shipping within 48h

2 hinged doors cupboard 475 mm width

Sloping top



- Feet : black ABS Ø 40 mm, Height 155 mm ajustable on 70mm
- Stainless steel feet and stainless steel castors in option
- Height of the front : 1810 mm

Designation	L x D x H mm	Kg	ON BLACK ABS FEET	ON STAINLESS STEEL CASTORS
			Ref.	Ref.
2 double panel doors 3 shelves, 2 of them adjustable	1000 x 475 x 1935	74	MAT2PH	MAT2PHRX
2 double panel doors - 1 vertical partition to 315 mm from the bottom - On the right, 3 small shelves, 1 of them adjustable	1000 x 475 x 1935	74	MAT2PV	MAT2PVRX



OPTIONS FOR MAT2	Kg	Ref.
Additional shelf for MAT2PH	2.08	SAMAT16/10
Additional shelf for MAT2PV	2.08	SAMAT16/06
Retention tray in AISI 304L stainless steel to be placed at the bottom of cupboard - Dim.: 935 x 422 x H 35 mm		SEQ043

Shipping within 48h

Options for high cupboards

Designation	Ref.
4 stainless steel feet - Add X to the end of the reference	.../X
4 stainless steel castors (2 with brake) - Add RX to the end of the reference, not available for 1 door cupboards	.../RX

2 hinged doors cupboard 600 mm width

Sloping top



- Feet: black ABS Ø 40, H 155 mm, adjustable up to 70 mm
- 4 stainless steel castors, 2 with brake
- Height of front: 1780 mm
- Top sloping at 15°

			ON BLACK ABS FEET	ON STAINLESS STEEL CASTORS
Designation	L x D x H mm	Kg	Ref.	Ref.
2 double panel doors	1000 x 600 x 1935	80	MAB10	MAB10RX
3 shelves, 2 of them adjustable	1200 x 600 x 1935	93	MAB12	MAB12RX
	1400 x 600 x 1935	108	MAB14	MAB14RX

► **CUSTOMIZED: CONSULT US**

Shipping within 48h

OPTIONS FOR MAB	Kg	Ref.
Additional shelf for MAB10	4.22	SAMAB16/10
Additional shelf for MAB12	5	SAMAB16/12
Additional shelf for MAB14	5.9	SAMAB16/14

Broom cupboard with hinged doors

Sloping top



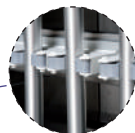
- Entirely in AISI 304 stainless steel
- Hole at the back to fix the cupboard against the wall
- Height of front: 1880 mm
- Top sloping at 15° (no storage on top for better hygiene)
- Ventilation holes at the top and at the bottom
- 2-point lock on each door
- Laminated swing doors on 3 stainless steel hinges
- 4 black ABS feet Ø 40 mm H 155 mm adjustable up to 70 mm



Interior layout for optimized storage

Designation	L x D x H mm	Kg	Ref.
Broom cupboard 1 swing door - 3 clamping sets	600 x 600 x 2040		MAC06
Broom cupboard 2 swing doors - 8 clamping sets	1000 x 600 x 2040	91	MAC10

INTERIOR LAYOUT:



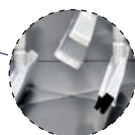
A row of clamping sets which enable to fix brooms*

MAC06 : 3 clamping sets to fix 3 brooms
MAC10 : 8 clamping sets to fix 8 brooms



2 rows of hooks for short-handled brushes and dust traps*

MAC06 : 2 rows of 1 hook for short-handled brushes
MAC10 : 2 rows of 4 hooks for short-handled brushes



Vertical partition, 3 small shelves enabling to put 4 buckets*

Discharge through a diamond shape with central hole at the bottom of the cupboard for drainage



MAC06 + stainless steel feet (MAC06X)

* Buckets, brooms and dust traps not provided

Options for high cupboards

Designation	Ref.
4 stainless steel feet - Add X to the end of the reference	.../X
4 stainless steel castors* (2 with brake) - Add RX to the end of the reference, not available for MAC06	.../RX

High cupboard with sliding doors

Sloping top

- Entirely in AISI 304L stainless steel
- Top sloping at 15°
- 2 stainless steel double panel sliding doors – Lock + Handles
- 4 x ABS feet Ø 40 mm, H 155 mm, adjustable up to 70 mm (6 feet from l. 1600 mm)

- Stainless steel feet and stainless steel castors in option
- 3 shelves (506 mm wide), 2 of them adjustable in height
- **Load per shelf: 100 kg**



CUPBOARDS Overall height : 1935 mm					EXTRA SHELF	
L X D mm	Height of front	Kg	Feet	Ref.	Kg	Ref.
1000 x 600	1772	90	4	MAG10	4.22	SAMAG16/10
1200 x 600	1772	91	4	MAG12	5	SAMAG16/12
1400 x 600	1772	111	4	MAG14	5.9	SAMAG16/14*
1600 x 600	1772	118	6	MAG16	6.7	SAMAG16/16*
1600 x 700	1745	139	6	MAG716	9.3	SAMAG16/716*
1800 x 600	1772	129	6	MAG18	7.6	SAMAG16/18*

Shipping within 48h

*Reinforced shelf

OPTIONS FOR MAG	Ref.
4 stainless steel feet* - Add X to the end of the reference	.../X
4 stainless steel castors* (up to 1400 mm) - Add RX to the end of the reference	.../RX

* Price x 1,5 for MAG16, MAG716 and MAG18 (6 feet)

Stainless steel clothing locker

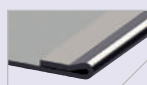
- Entirely in AISI 304L stainless steel
- Sloping top (no storage on top for better hygiene)
- 4 feet: black ABS Ø 40, H 155 mm, adjustable up to 70 mm
- Available in 2 or 3 compartment versions

For each compartment:

- One upper shelf for storing a helmet
- 2 hangers (2/3 clean clothes, 1/3 dirty clothes)
- Label holder
- Fitted door with padlock closure (padlock not supplied)
- Ventilation holes in the top and bottom of the doors



Crushed folds
for more safety



Designation	L x D x H mm	Kg	Ref.
2 compartments	800 x 500 x 2100	68	MAV2
3 compartments	1200 x 500 x 2100	102	MAV3

OPTION	Ref.
4 stainless steel feet Add " X " to the end of the reference	.../X